

A close-up photograph of a potter's hands shaping a clay vase on a pottery wheel. The potter's fingers are covered in wet clay, and the vase is in the process of being formed, showing horizontal ridges from the wheel. The background is dark, making the clay and the potter's hands stand out.

PREMIUM MID-RANGE CLAYS

PREMIUM CLAYS ADVANTAGE

MANGANESE-FREE | NO SPECIAL FIRING REQUIRED*



16M White Chocolate



30M Milk Chocolate



32M Dark Chocolate

Category: Premium Mid-Range Clay
Firing Range: Cone 5-7

All bars are glazed with HF-9 Zinc-Free Clear Glaze.
Fired to cone 5.



Conforms To
ASTM D-4236



Food safe
with glaze

Definition of Cone Temperatures:

Cone 5 = 1184°C (at 150°C/hour for the final 100°C of firing) 2201°F (at 270°F/hour in the final 200°F of firing)

Cone 6 = 1241°C (at 150°C/hour for the final 100°C of firing) 2266°F (at 270°F/hour in the final 200°F of firing)

Cone 7 = 1255°C (at 150°C/hour for the final 100°C of firing) 2291°F (at 270°F/hour in the final 200°F of firing)

CHEAT SHEET

	Cone 5	Cone 6
16M White Chocolate	Shrinkage: 13.5% Absorption: 0.5%	Shrinkage: 13.9% Absorption: 0.3%
30M Milk Chocolate	Shrinkage: 14.36% Absorption: 0.5%	Shrinkage: 14.8% Absorption: 0.2%
32M Dark Chocolate	Shrinkage: 13.4% Absorption: 0.3%	Shrinkage: 14.3% Absorption: 0.2%

PACKAGING

Packaged in easy to carry 20lb boxes with four individually wrapped 5lb blocks.



KEY FEATURES



Manganese Free!



Plastic



No Blistering



Low Staining Formula



V-359 Ultra White Underglaze
on 32M Dark Chocolate clay.
Fired to cone 5.
Artist: Ian F. Thomas

*No manganese means no special firing required! Manganese often creates blistering in a piece if fired normally, but because the chocolate clays are formulated without, they can be fired just like any other mid-high fire clay.

MADE FOR AMACO GLAZES!

FORMULATED TO PAIR BEST WITH AMACO HIGH-FIRE GLAZES. ALL TILES FIRED TO CONE 5.

16M White
Chocolate Clay

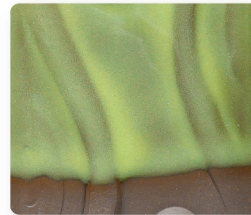
30M Milk
Chocolate Clay

32M Dark
Chocolate Clay

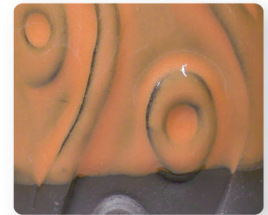
Celadon



C-53 Weeping Plum

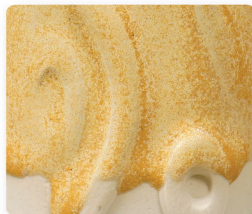


C-41 Pear

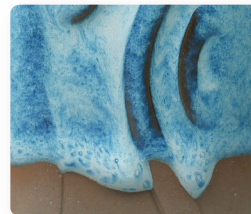


C-33 Sandalwood

POTTER'S choice



PC-68 Golden Honey



PC-20 Blue Rutile



PC-17 Honey Flux

POTTER'S choice FLUX



PCF-19 Cirrus Flow



PCF-18 Honeydew



PCF-54 Flux Blossom

COSMOS



CO-07 Solar Flare

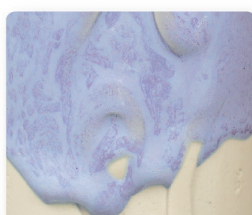


CO-13 Mars Crystal

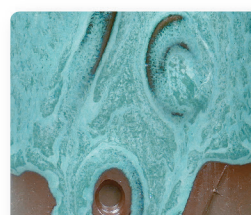


CO-06 Supernova

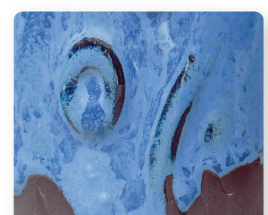
PHASE GLAZE



PG-55 Floating Lavender



PG-42 Teal Drift



PG-24 Night Rain

SEE IT IN ACTION!



PC-72 Fire & Ice on 16M White Chocolate clay. Fired to cone 5



C-24 Succulent on 16M White Chocolate clay. Fired to cone 5



Variety of Velvet Underglazes and AMACO glazes on 30M Milk Chocolate clay. Fired to cone 5.
Artist: Meghan Yarnell



C-42 Saguaro on 30M Milk Chocolate clay. Fired to cone 5



C-43 Wasabi on 32M Dark Chocolate clay. Fired to cone 5



Variety of Velvet Underglazes and AMACO glazes on 30M Milk Chocolate clay. Fired to cone 5.
Artist: Meghan Yarnell

SGRAFFITO

These dark and rich clays work great for sgraffito!



V-317 Coral on 30M Milk Chocolate clay. Fired to cone 5



V-329 Sea Glass on 30M Milk Chocolate clay. Fired to cone 5



PC-68 Golden Honey on 30M Milk Chocolate clay. Fired to cone 5.
Artist: Kenny Sprinkle

ARTIST HANDLES: Meghan Yarnell - @meghcallie
Kenny Sprinkle - @kensprink
Ian F. Thomas - @Ian_F_Thomas



WANT MORE?

Visit our 5/6 glaze forum at [Facebook.com/groups/potterschoiceex](https://www.facebook.com/groups/potterschoiceex) to find inspiration, share results, and discuss with other AMACO customers!



amaco.com



[@amacobrent](https://www.instagram.com/amacobrent)



[@amaco_brent](https://www.tiktok.com/@amaco_brent)

Part No: 11847U